

Created by: Brandon Haycox, Schaefer Middle School

Grade level: 8

Primary Source Citation: The Lincoln Log Cabin at Farmington, Illinois, Henry Whitney Clay. Life on the Circuit with Lincoln. Boston: Estes and Lauriat, 1892. Permission – Northern Illinois University, <http://lincoln.lib.niu.edu/fimage/image.php?id=1017>.

Allow students, in groups or individually, to examine the image located at the above link while answering the questions below in order. These questions will prepare students to think critically when observing primary source documents, particularly photographs.

Level I: Description

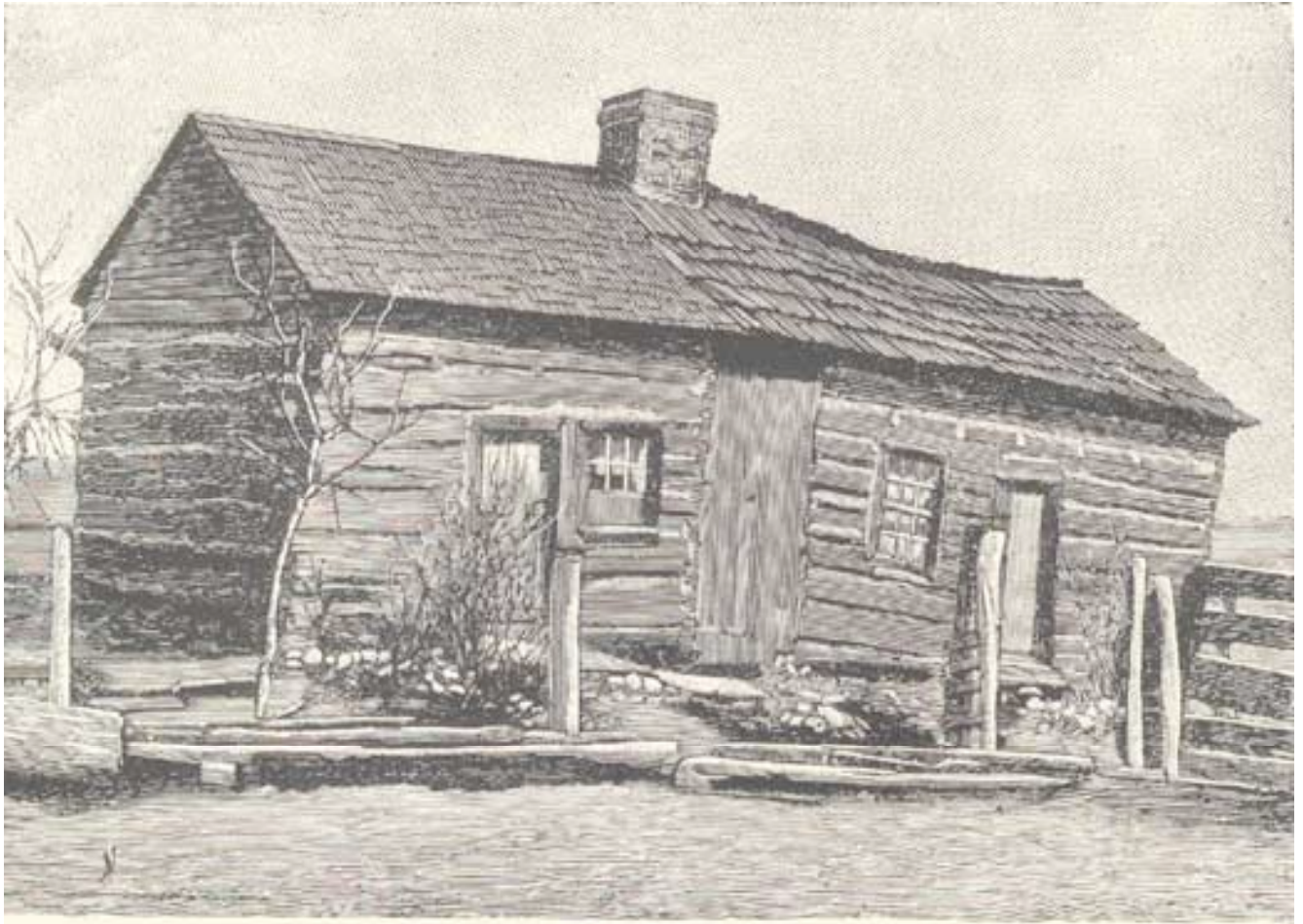
1. What details do you see in this picture?
2. What materials and tools were used to make this structure?

Level II: Interpretation

1. Our source is not dated. Can you make an educated guess about when it was created?

Level III: Analysis

1. What does this image tell you about housing during this period?
2. Do you think this was Abraham Lincoln's home before or after his presidency?



THE LINCOLN LOG CABIN, AT FARMINGTON, ILLINOIS.